

Whooping Crane (*Grus americana*)

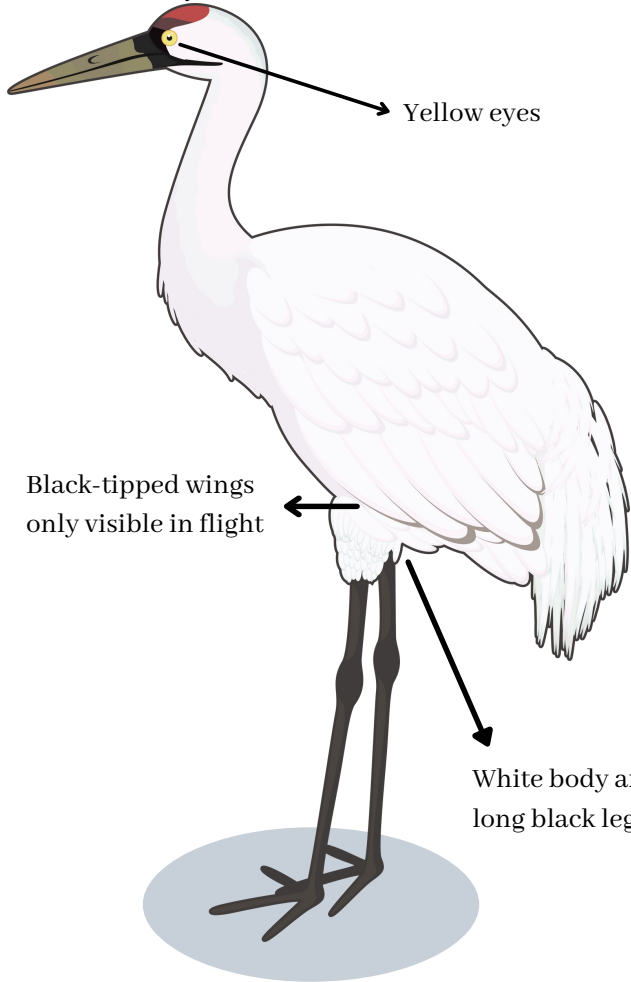
Rust coloured patches on top and back of head along with black feathers on both sides of the head

Yellow eyes

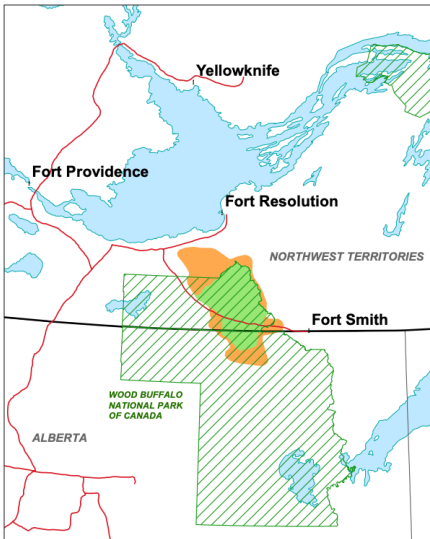
1.5 meters

Black-tipped wings only visible in flight

White body and long black legs



Report Whooping Crane sightings on www.ebird.org.



Whooping Crane ■
 Whooping Crane Critical Habitat ■
 National Parks ■

Status

Endangered

Appearance

Body Colour: White
Distinct Features:
 Yellow eyes, rust coloured patches on their head, black feathers on both sides of their head, black tipped wings only visible in flight

Size

Standing Height:
 Up to 1.5 meters
Wingspan:
 Over 2 meters

Habitat

Nests in shallow ponds or wetlands, typically separated by narrow ridges where trees such as white and black spruce grow.

Range

Whooping Cranes winter in southern Texas and arrive in the NWT to breed in April and May.

Population

More than 850 birds are alive today. They are descendants of only three family lines.

