



Photo by Ozgur Oner

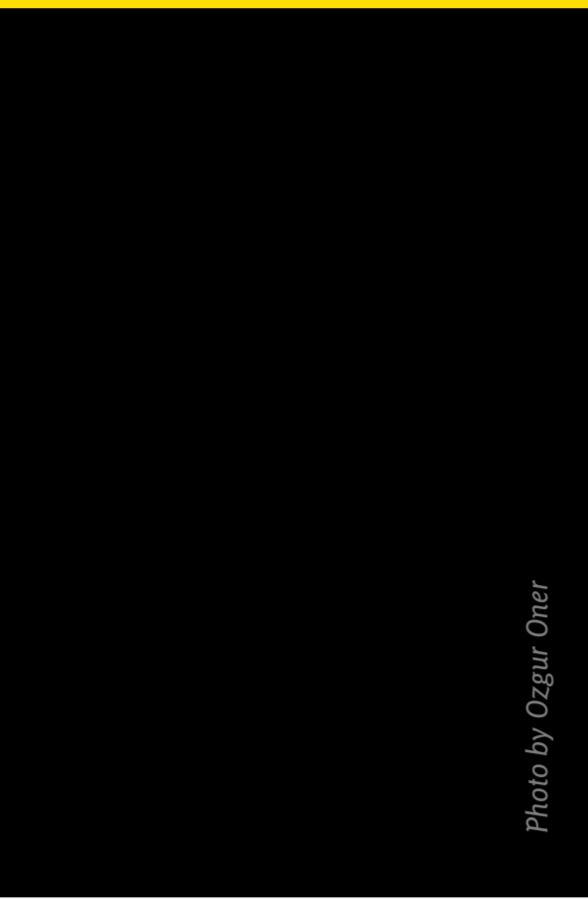


Photo by Ozgur Oner

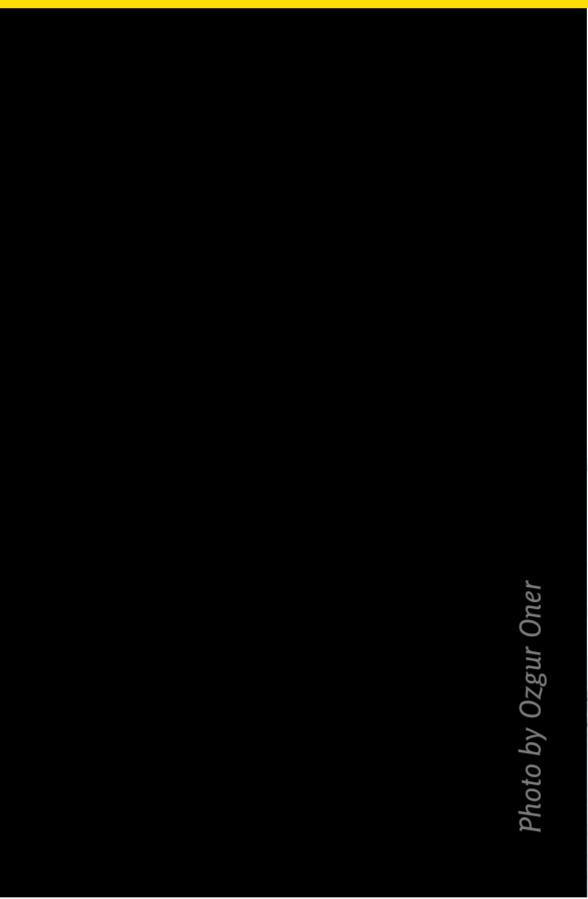
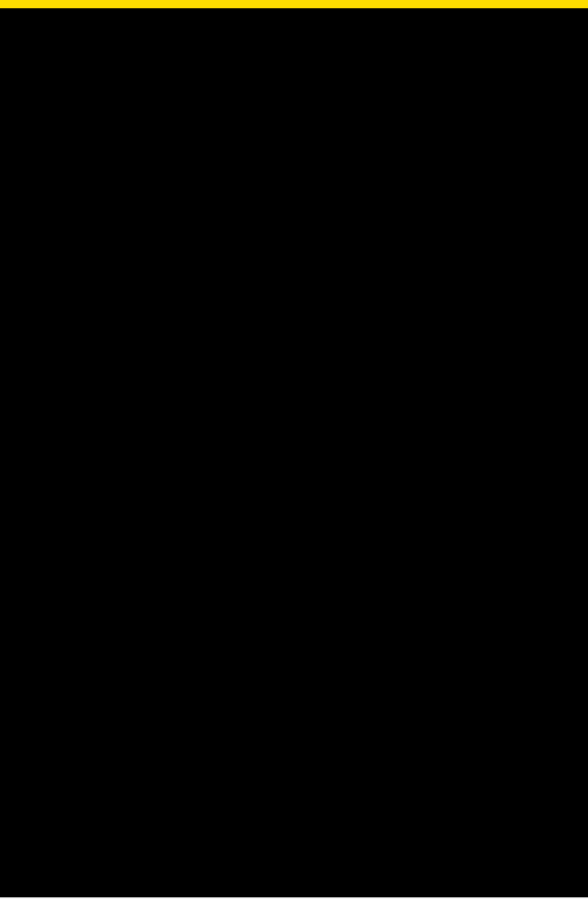
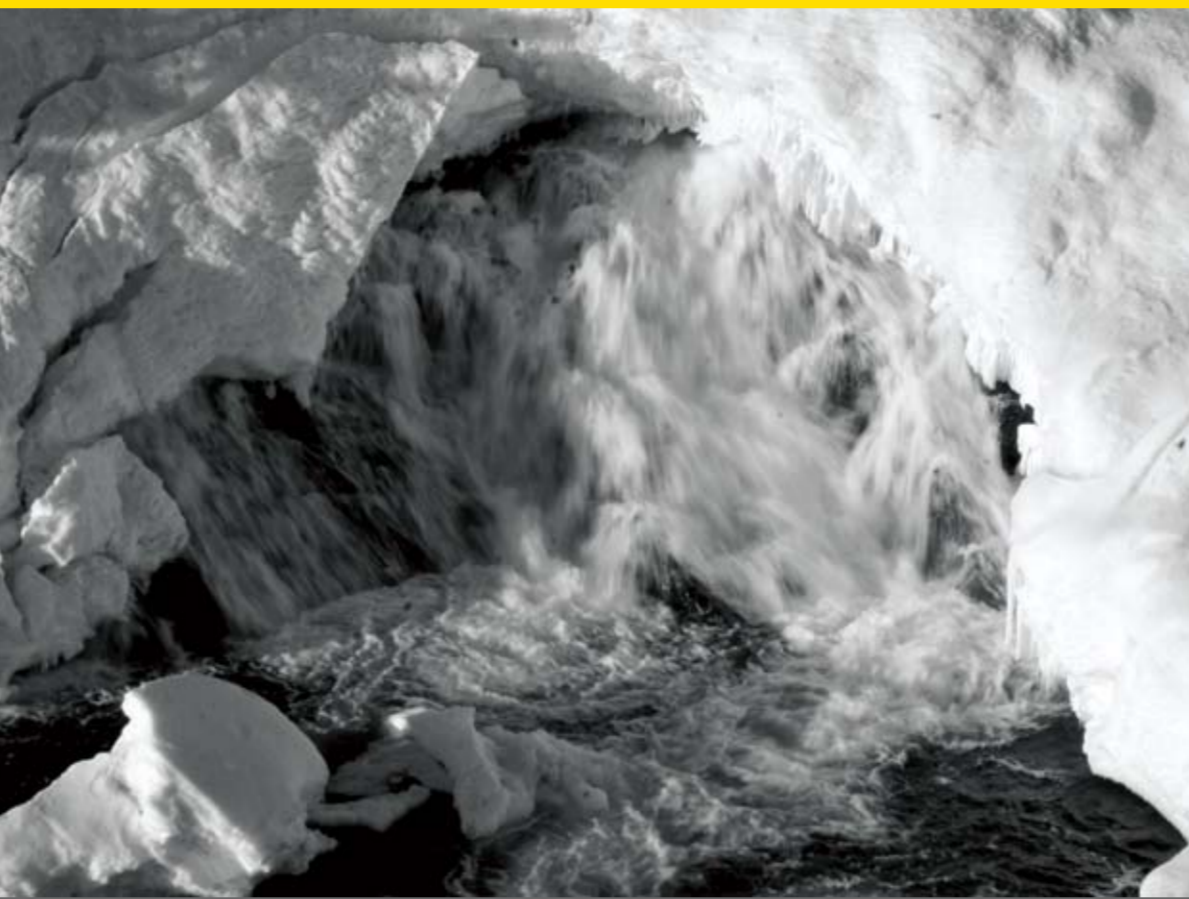


Photo by Ozgur Oner



## Food

### Possible Impacts

Changing climate conditions are affecting people's ability to hunt and fish.

Weather is becoming less predictable which can make travel on the land more difficult and potentially dangerous.

Shorter winter road seasons and more expensive fuel may make store-bought food more expensive.

Shorter and warmer winters may make it more difficult to use traditional food storage systems that rely on cold to keep food from spoiling.

### Take Action!

#### ACTION

Observe and share information about how the land, plants and animals are changing.

#### BENEFIT

Help other community members to move safely on the land, and to access food resources.

#### ACTION

Share observations with national and international audiences.

#### BENEFIT

Help document the changing environment, and encourage action to reduce climate change.

#### ACTION

Share ideas with community members and plan how to continue traditional hunting, fishing and harvesting in a safe and sustainable manner.

#### BENEFIT

Continue to provide country foods, and maintain our connection with the land.

#### ACTION

Grow our own food in community and family gardens.

#### BENEFIT

Produce fresh, healthy, inexpensive vegetables from the land.

## Water

### Possible Impacts

As permafrost melts, the ground may become less stable causing problems for buildings, sewage lagoons, pipes and utilidors.

Changes to rain, snow, and temperature patterns may alter spring run-off, flood frequency and storm intensity.

### Take Action!

#### ACTION

Find out how the sewage treatment system (lagoon, wetland, pipes, etc.) may be impacted by permafrost melting and determine if any action is needed.

#### BENEFIT

Protect our community's health and save money by planning ahead, and being aware of lagoon areas and pipes.

#### ACTION

Find out what the predicted changes to rain, snow, and water flow in your community are. How could these changes affect residents? Are community buildings designed for these new conditions?

#### BENEFIT

Plan ahead to ensure the safety and health of residents.

#### ACTION

Develop a flood plan.

#### BENEFIT

Prepare for more variable weather conditions.

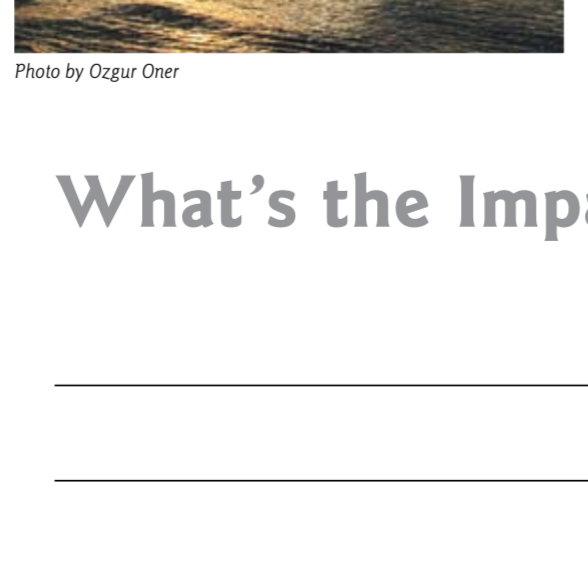
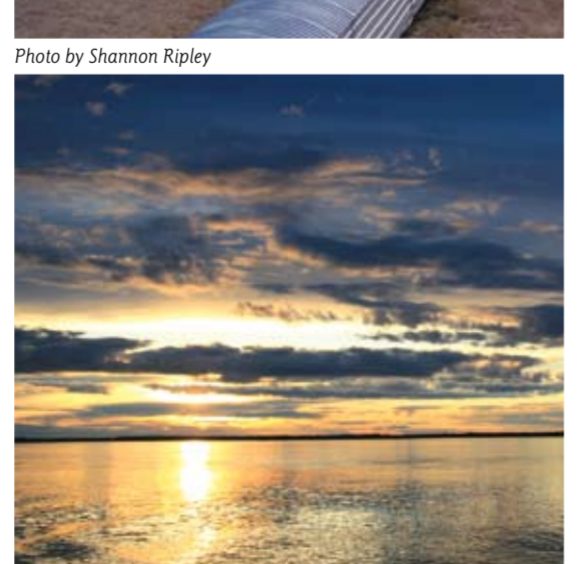
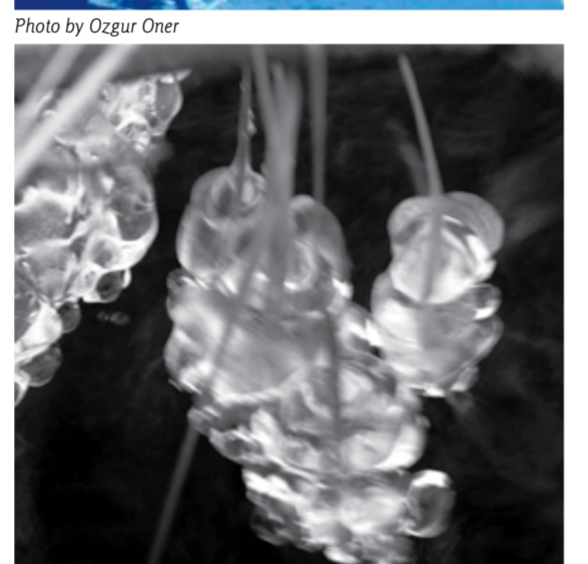


Photo by Ozgur Oner

Photo by Ozgur Oner

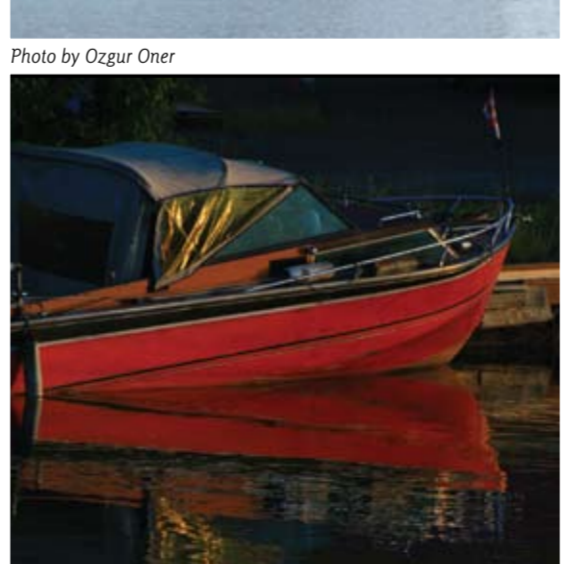
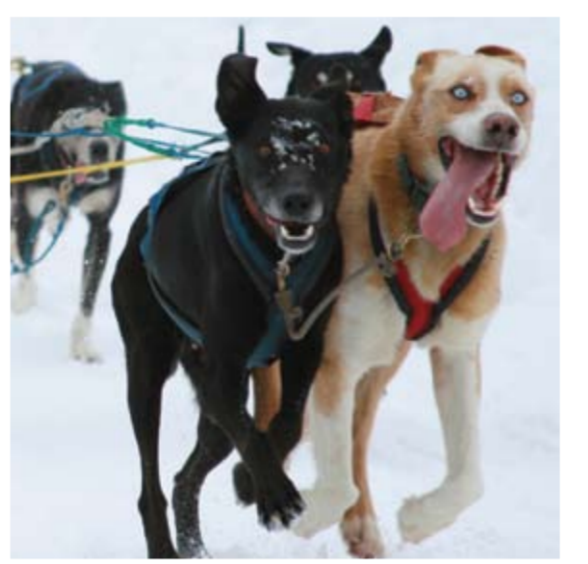


Photo by Ozgur Oner

## Transport

### Possible Impacts

Melting permafrost can cause roads to shift, rise, and sink, and can make roads, bridges and airport runways less stable.

Warmer temperatures can shorten the ice road season. Some rivers may have lower water levels when boats and barges need to deliver goods to communities.

A warmer, more variable climate impacts our ability to travel on traditional trails, and to get to hunting grounds and fishing areas.

### Take Action!

#### ACTION

Check ice and land conditions before travelling, and encourage communication among people about these.

#### BENEFIT

Help everyone to travel more safely on the land and water – information and communication is safety.

#### ACTION

Make sure maintenance and snow clearing budgets take climate change into consideration. Melting permafrost and more snow will likely cause higher maintenance and construction costs.

#### BENEFIT

Planning ahead can help avoid financial surprises.

#### ACTION

Plan ahead to ensure goods are delivered to our community within shorter winter road seasons or during the shipping season.

#### BENEFIT

Reduce expensive air shipping costs when possible.

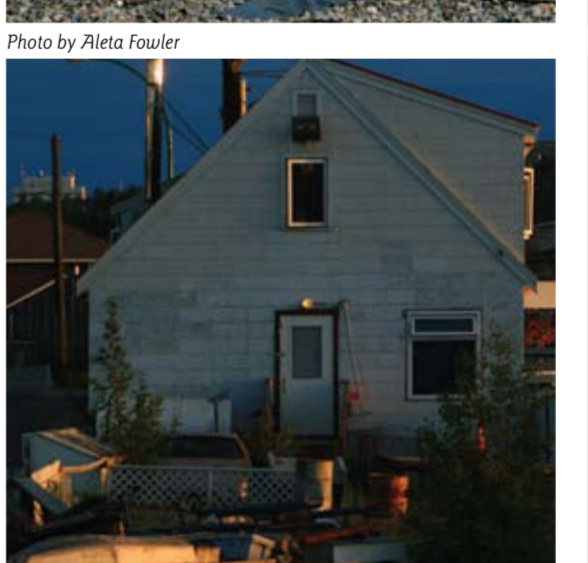
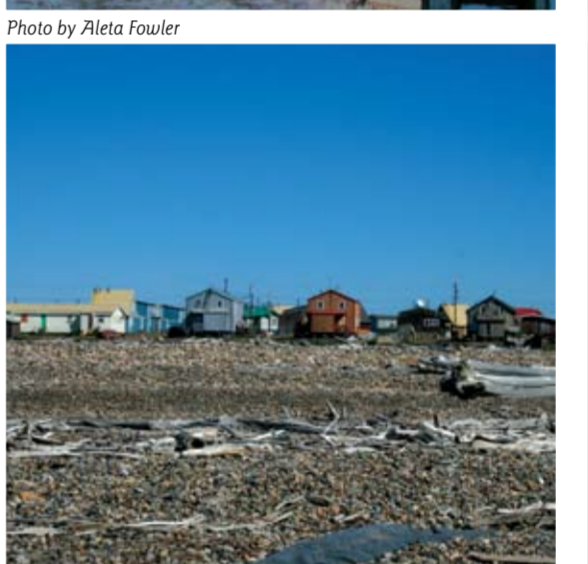


Photo by Duwayne Wohlgenuth

## Buildings

### Possible Impacts

As permafrost melts, the ground can become less stable for buildings, particularly those buildings that were designed to rely on permafrost.

Increased and more variable snowfalls and changing snowdrift patterns can damage buildings.

Higher shipping costs may make fuel and electricity more expensive.

Storms and floods can create serious water damage in buildings.

### Take Action!

#### ACTION

Prepare a schedule and check and maintain the foundations of community buildings and houses regularly.

#### BENEFIT

Save money by doing regular maintenance (leveling) and reducing expensive repairs.

#### ACTION

Have a geotechnical study done for all potential new building sites, and follow its recommendations in detail.

Make sure that drainage, erosion, and permafrost have been considered, and that the building foundation is suitable for the site.

#### BENEFIT

Save money by reducing the chance of future building failure and including the cost of making buildings ready for climate change in the initial design.

#### ACTION

Develop and implement a community energy plan.

#### BENEFIT

Reduce fuel use and save on fuel costs.

### What's the Impact in Our Community?

---

---

---

---

---

---

---

---

### Action We Can Take in Our Community!

---

---

---

---

---

---

---

---

